

STREAM series

Ingest and Streaming Solution

Whether viewed through a PC or set-top box, IP-based streaming content delivery is redefining broadcast. Bridging the worlds of traditional video and IP networks, your media encoding and streaming platforms are key points along the critical path between you and your viewers. With StreamZ Live, the same exceptional output quality, robust reliability and efficient operation that leading studios and networks depend on daily in our multi-function StreamZ studio encoders are available in a dedicated live platform. StreamZ Live is ideal for multi-channel installations, and supports distribution channels from IPTV to webcasting and mobile devices.

Live encoders are available with a choice of encoding formats to reach your desired platforms, from Adobe® Flash® (H.264/AVC or On2 VP6), Microsoft® Silverlight™ (VC-1, Windows Media®) and QuickTime® (Darwin server) powered web experiences to IPTV set-top boxes and mobile phones.



MODEL STREAM

Inputs and Encoding Channels	Stream 500 th	Stream 1400 th	Stream 1600 th	Stream 2600 th
Encoding channels	1	1	1	2
Component analog video inputs (3 BNC)		2 ³	2 ¹	2 ¹
Y/C (S-Video) video inputs (Mini-Din)	1	2 ³	2 ¹	2 ¹
Composite video inputs	1 RCA	4 BNC ³	4 ¹	4 BNC ¹
Balanced analog audio inputs (XLR)	4	4 ³	4 ¹	4 ¹
Unbalanced analog audio inputs (RCA)	2	4 ³	4 ¹	4 ¹
SDI (supports embedded audio)		1	1	2
AES/EBU stereo audio (XLR)		2 ³	2 ¹	2 stereo ¹
DV via host system IEEE-1394 port ²			1	1
Closed Caption support ⁴		•	•	•
Input video frame formats	486i (NTSC), 576i (PAL)	486i (NTSC), 576i (PAL)	486i (NTSC), 576i (PAL)	486i (NTSC), 576i (PAL)

PLEASE CONTACT US FOR MORE CLARIFY INFOMATION

- 1 Optional breakout cable or breakout box required for analog and AES/EBU inputs with StreamZ-1600 (SDI connectivity standard).
- 2 Hardware-based pre-processing not available on host-based inputs.
- 3 Optional breakout cable or breakout box required for analog and AES/EBU inputs (SDI connectivity standard)
- 4 Closed Captioning supported in select encoding formats

ENCODING FORMATS

- Standard: VC-1/WMV/Silverlight, MPEG-2/1, QuickTime® (inc. MPEG-4 and H.264), AVI, MP3 and more.
- Optional: Advanced H.264 (AVC, MPEG-4 Part 10), Adobe Flash (H.264 or On2 VP6), Dolby® Digital and Digital Plus, Avid DNxHD®, MXF, GXF, LXF, Omneon, DVCPRO, 3GPP and more.

GENERAL FEATURES

- Capture/encode to files from live inputs
- Capture/encode to files from deck with RS-422 control
- Transcode from source media files
- Live streaming
- Archive to files during live streaming

HARDWARE PROCESSING (SDI, AES AND ANALOG INPUTS)

- Motion adaptive de-interlacing
- Noise reduction (2D)
- Noise reduction (motion adaptive 3D)
- Aspect ratio conversion, cropping, scaling, filtering
- Proc amp controls, gamma correction
- Graphic overlay
- Audio processing (7-band parametric EQ per channel, dynamic range compression/expansion, base/treble)
- Audio sample rate conversion, volume control

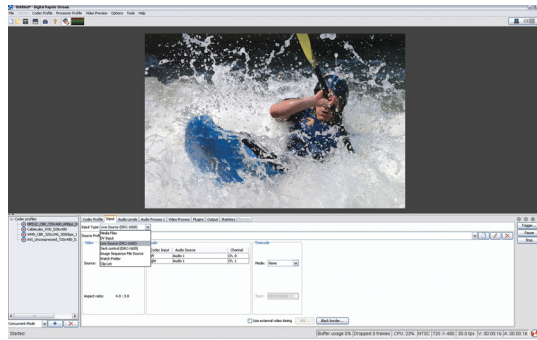
BROADCAST MANAGER FEATURE

Supported encoders (sold separately)

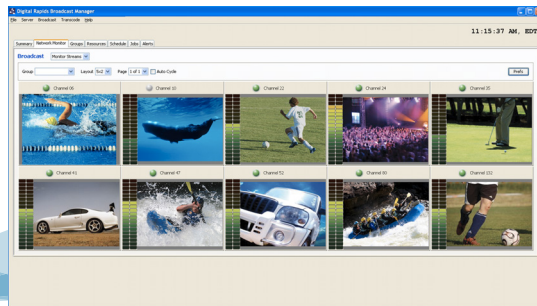
- Automatic encoder discovery plus firewall and proxy support for easy deployment Failover and "self-healing" fault recovery modes
- "Control room" view with mosaic-style, multi-channel confidence monitoring
- Scheduling (online/offline, start/stop, encoding tasks/parameters, reboot, etc.) Alert notifications
- Simple Network Management Protocol (SNMP) support Individual and group-based encoder management
- Control of upstream third-party video routers for enhanced failover
- Event history tracking
- User authentication and authorization with local and LDAP access management Web Services (SOAP) API for custom integration

STREAM FE SOFTWARE FEATURES

- Easy-to-use interface with single-click encoding
- Simultaneous output to multiple codecs, resolutions and bitrates
- Interactive control of hardware preprocessing capabilities
- Programmable event triggers (GPIO, duration, custom keys)
- Batch Encoding (real-time capture with auto transcode)
- Video and audio processing plug-ins (graphic and video overlay, adaptive inverse telecine, color space conversion, audio track mix-down and more) with support for third-party DirectShow and DMO plug-ins
- E-mail notifications and automated FTP distribution
- Watch Folder support for media file transcoding
- Automated template-based publishing
- Integration with Digital Rapids Transcode Manager and Digital Rapids Broadcast Manager (each sold separately)
- Forensic watermarking for content protection (Civolution CompoTrack, Thomson Nexguard) and tracking/monitoring



Stream LE/FE Software Interface



Broadcast Manager Software Interface

